



# GAT MONTHLY MEMBERSHIP PROGRESS REPORT

Results as of: 2/29/2024

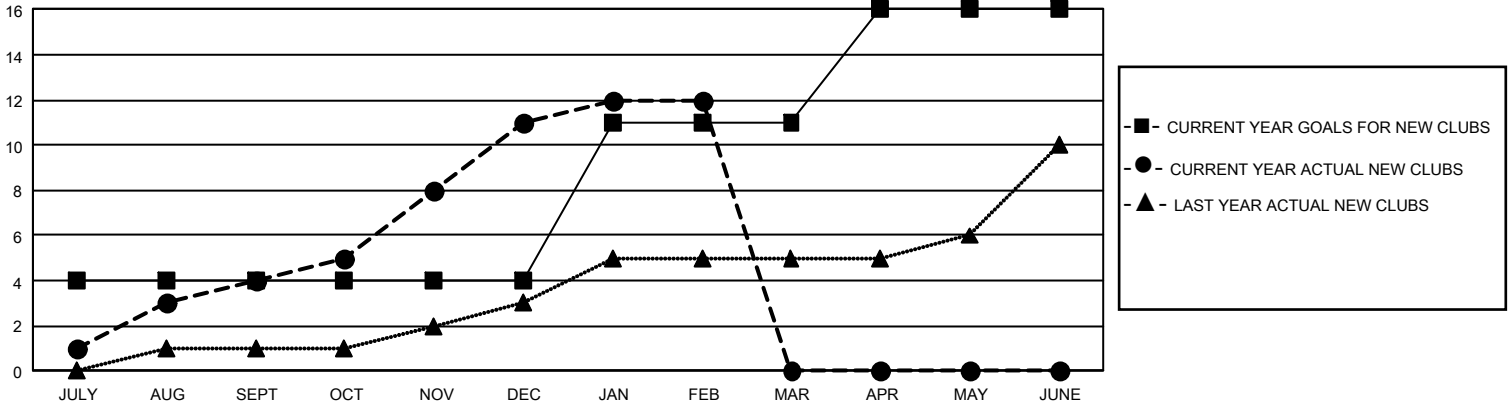
## GMT Constitutional Area 8, Group D

REPORT DOES NOT INCLUDE CLUBS IN UNDISTRICTED AREAS.

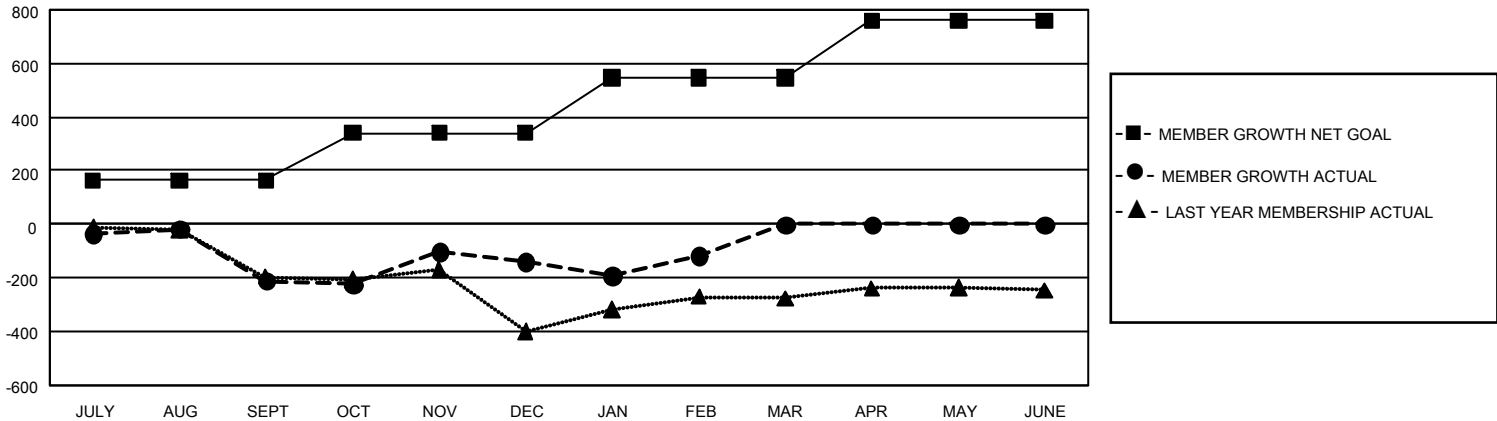
Clubs			
RESULTS FOR 2023-2024			
QUARTER	NEW CLUB GOAL	NEW CLUBS	DROPPED CLUBS
JULY/AUG/SEPT	12	4	2
OCT/NOV/DEC	0	7	5
JAN/FEB/MAR	21	1	5
APR/MAY/JUNE	15	0	0

Members			
RESULTS FOR 2023-2024			
QUARTER	MEMBER GROWTH NET GOAL	MEMBER GROWTH ACTUAL	DROPPED MEMBERS ACTUAL (including transfers)
JULY/AUG/SEPT	163	271	473
OCT/NOV/DEC	178	593	477
JAN/FEB/MAR	206	322	224
APR/MAY/JUNE	214	0	0

GOALS AND ACTUAL NEW CLUBS CUMULATIVE



GOALS AND ACTUAL MEMBERS CUMULATIVE



<b>DROPPED CLUBS: 12</b>	109 CLUBS OF 193 ADDED 1 OR MORE NEW MEMBERS	<b><u>GENDER DISTRIBUTION</u></b>	
		MALE 1,526 (38.69%) FEMALE 2,417 (61.28%) NON BINARY 1 (0.03%) PREFER NOT TO ANSWER 0 (0.00%)	TOTAL FAMILY UNIT MEMBERS 516 FAMILY MEMBERS PAYING HALF DUES 301
<b><u>DROPPED MEMBERS</u></b>		<a href="#">CLICK HERE FOR CUMULATIVE MEMBERSHIP DATA</a>	
DECEASED 17 CLUB CANCELLED 191 OTHER 966 <b>TOTAL 1,174</b>			